

SIMPLE STEPS TO PLANTING A WILDFLOWER MEADOW

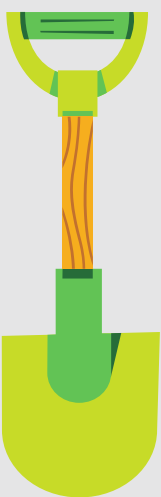
by WildSL6



1

FIND A SUITABLE SITE

Most UK wildflowers will thrive in unproductive soil, because they receive little to no competition with grasses and weeds. It is ideal to plant in a sunny spot of the garden. Why not sacrifice a boarder in your lawn and dedicate it to a strip of wildflowers?



2

PREPARE YOUR SOIL

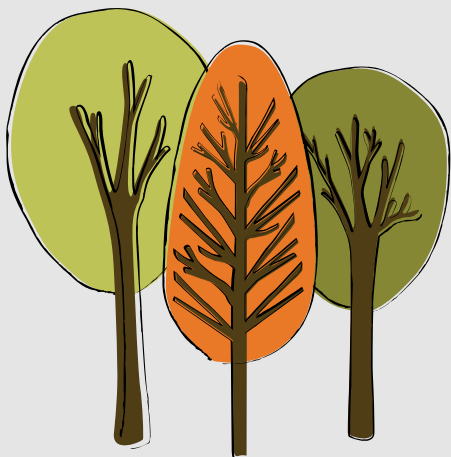
If you are planting on old lawn it is important you prepare the soil thoroughly to give your seeds the best chance to germinate. Be sure to remove weeds either by hand or using non-chemical weed control. Remove as much grass as possible and consider including Yellow Rattle in your seed mix to suppress the remaining grass. Rake and make the soil firm ready to plant seeds.



3

FIND THE RIGHT SEEDS

It is very important to stick to native wildflower species when choosing seeds as this helps maintain healthy biodiversity by attractive native insect species. Each seed merchants will supply mixtures of seeds which are appropriate for different soil types, so check yours before buying. By choosing a mix of suitable seeds you can guarantee at least some with flourish.



4

WHEN TO SOW

This is very dependent on soil type and weather. For most, the ideal sowing seasons are Autumn or Spring when the earth is warm, but most wildflower seeds will survive on the ground and sprout when they are ready, so don't let timings put you off!



5

SOWING SEEDS

Make sure that your seeds are making good contact with the soil, otherwise they will not germinate. Avoid carelessly scattering seeds, as a huge proportion will not make sufficient contact. Sow methodically and gently tread the seeds onto the soil to ensure good contact without covering them. Watering with care so as not to wash the seeds away.



6

MAINTENANCE

Be sure to remove any grass or weed growth in the first few weeks to allow space for your seeds to take off. You may find birds become interested so it is sometimes worthwhile laying netting over your plot, but be sure to check it regularly to avoid small birds and mammals getting trapped.